

AGA KHAN UNIVERSITY EXAMINATION BOARD

HIGHER SECONDARY SCHOOL CERTIFICATE

CLASS XII

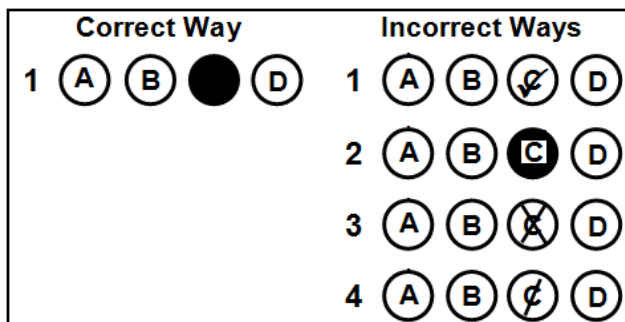
ANNUAL EXAMINATIONS (THEORY) 2024

Pakistan Studies Paper I

Time: 55 minutes Marks: 30

INSTRUCTIONS

1. Read each question carefully.
2. Answer the questions on the separate answer sheet provided. DO NOT write your answers on the question paper.
3. There are 100 answer numbers on the answer sheet. Use answer numbers 1 to 30 only.
4. In each question, there are four choices A, B, C, D. Choose ONE. On the answer grid, black out the circle for your choice with a pencil as shown below.



Candidate's Signature

5. If you want to change your answer, ERASE the first answer completely with a rubber, before blacking out a new circle.
6. DO NOT write anything in the answer grid. The computer only records what is in the circles.

1. The study of constitutional development from 1947 till date, in the subject of Pakistan Studies, leads one to understand the process of
- A. development of defence strategies.
 - B. distribution of power between units.
 - C. economic development in the country.
 - D. development of relationships with other countries.

2. Maria belongs to a society where the government ensures all rights including that of freedom of speech and assembly.

The component of ideology that is highlighted in the given situation is

- A. equity.
 - B. tolerance.
 - C. fraternity.
 - D. sovereignty.
3. The political contribution of Sir Syed Ahmed Khan was that he
- A. instituted Scientific Society.
 - B. established the Muhammadan Educational Conference.
 - C. saved the lives of many British during the War of Independence in 1857.
 - D. wrote a pamphlet to clear the misunderstandings between the British and the Muslims.
4. The POSITIVE impact of the Khilafat Movement (1919-1924) was that Muslims of the subcontinent were able to
- A. develop political consciousness.
 - B. promote the feeling of regionalism.
 - C. become economically independent.
 - D. strengthen ties with the British nobility.
5. Sir Cyril Radcliffe misused his powers and awarded Muslim-majority areas of Gurdaspur to India.
- The impact of this decision was that it provided India with a/ an
- A. gateway to reach Kashmir.
 - B. road access to China for Tibet intervention.
 - C. chance to interfere in the progress of Pakistan.
 - D. access for military intervention in Hyderabad Deccan.
6. All of the following are crucial economic problems that arose between India and Pakistan due to the division of the Punjab in 1947 EXCEPT
- A. financial issue.
 - B. canal water dispute.
 - C. administrative issue.
 - D. division of military assets.

7. "I think they ought to be very severely punished, because they undermine the entire system of control and regulation of foodstuffs and essential commodities, and cause wholesale starvation and want and even death."

(Speech of Quaid-e-Azam, Constituent Assembly on August 11, 1947)

According to the given excerpt, the person pointed out by Quaid-e-Azam to be severely punished is the one who is involved in

- A. bribery.
 - B. nepotism.
 - C. sectarianism.
 - D. black marketing.
8. According to the 1956 constitution, the head of the government was the
- A. President.
 - B. Chief Justice.
 - C. Prime Minister.
 - D. Chief of Army Staff.
9. According to the 1962 constitution, the president enjoyed all of the following powers EXCEPT to
- A. abolish the constitution.
 - B. issue an ordinance to veto legislation.
 - C. establish *Zakat* and *Ushr* board in Pakistan.
 - D. hold any office of profit in the services of Pakistan.
10. To strengthen Islamisation in the country, two institutions that were established according to the 1962 constitution were
- A. Council of Islamic Ideology and Federal Sharia Court.
 - B. Islamic Research Institution and Council of Islamic Ideology.
 - C. Federal Sharia Court and Advisory Council of Islamic Ideology.
 - D. Advisory Council of Islamic Ideology and Islamic Research Institution.
11. According to the Objectives Resolution 1949, the type of government favourable for Pakistan is
- A. oligarchy.
 - B. theocracy.
 - C. democracy.
 - D. aristocracy.
12. After the 18th amendment of the 1973 constitution, the responsibility of the education sector has been shifted to the legislative and executive jurisdiction of the
- A. provinces.
 - B. armed forces.
 - C. local governments.
 - D. federal government.

PLEASE TURN OVER THE PAGE

13. The system of Basic Democracies introduced by General Ayub Khan (1958-1968) did NOT gain popularity amongst the masses because it
- A. allowed elections to be held based on the party system.
 - B. allowed basic democrats to elect the president indirectly.
 - C. provided an indirect election system for the local officers.
 - D. provided the authority to the basic democrats to control the police force.
14. The establishment of *Bait-ul-Maal* by Hazrat Muhammad (PBUH) led to the initiation of a/ an
- A. secular state.
 - B. welfare state.
 - C. theocratic state.
 - D. aristocratic state.
15. In a classroom, there are a variety of students with diversified cultural backgrounds and experiences.
- One of the benefits of this diversity would be that it
- A. brings a variety of perspectives to the classroom.
 - B. offers an opportunity to develop sportsmanship.
 - C. encourages teacher-oriented approach.
 - D. creates a homogeneous identity.
16. The civilisation that symbolises the growth of Buddhism in the region of Pakistan is
- A. Soan.
 - B. Kushan.
 - C. Gandhara.
 - D. Mehrgarh.
17. The policy of privatisation in Pakistan was reintroduced by
- A. Iskander Mirza.
 - B. General Yahya Khan.
 - C. Zulfikar Ali Bhutto.
 - D. General Zia-ul-Haq.
18. In 1959, General Ayub Khan announced an industrial policy which emphasised the utilisation of raw materials available in the country.
- The impact of this policy on the economy of the country was that
- A. import of all sort of raw materials was banned.
 - B. local manufacturers were able to gain profits.
 - C. prices of foreign products were increased.
 - D. exports of the products were reduced.

19. Which of the following problems could have been resolved by the completion of Kalabagh dam?
- A. Political crisis
 - B. Electricity crisis
 - C. Administrative crisis
 - D. Environmental crisis
20. If a country's Gross National Product (GNP) is higher than its Gross Domestic Product (GDP), then the reason behind this increase is that the
- A. imports of the country are higher than its exports.
 - B. resources available in the country are greater than its population.
 - C. taxes applied on luxury goods are very minimal than the necessities.
 - D. remittances are higher than the income earned by foreigners in a country.
21. All of the following actions have a direct role in developing the interest in students for modern research and reflective observation in schools EXCEPT
- A. encouraging students to participate in community service.
 - B. promoting the technical skills of the students.
 - C. introducing project-based learning.
 - D. providing training to the teachers.
22. Out of 232,000 total Pakistani doctors, 110,000 are female doctors. Out of the total of 110,000 female doctors almost more than 60% (60,000) of female doctors are not practising.

(The Nation, September 21, 2019)

This is due to the

- A. inability to connect the theory knowledge from the practical.
 - B. cultural pressure regarding family responsibilities.
 - C. limited quota jobs for women in urban areas.
 - D. lack of proper remuneration packages.
23. The factor that can help to develop national integration in Pakistan is the
- A. protection of nuclear assets.
 - B. promotion of trading activities.
 - C. protection of cultural domination.
 - D. promotion of common cultural values.
24. Pakistan is a multi-ethnic, multi-cultural, multi-lingual and multi-religious society.
- The problem that occurs with building national integration in Pakistan is
- A. casteism.
 - B. secularism.
 - C. communism.
 - D. sectarianism.

PLEASE TURN OVER THE PAGE

25. Which of the following steps will help strengthen national integration across Pakistan?
- A. Equal representation of all provinces in the senate
 - B. Establishment of a unitary form of government
 - C. Encouragement of regional political parties
 - D. Fair treatment of all ethnic groups

26. Read the following statements:

- Pakistan advocates peaceful settlement of international disputes.
- Pakistan advocates cordial relationship with the neighbouring and Muslim States.
- Pakistan protects its sovereignty and national interest at all costs.

The determinant of Pakistan's Foreign Policy described in the given statements is

- A. location.
- B. ideology.
- C. economy.
- D. nuclear capability.

27. Pakistan's geo-strategic location is considered significant in the world because it
- A. has deep warm waters.
 - B. is a landlocked country.
 - C. lies between Europe and Africa.
 - D. controls the oil trade through the Arabian Sea.

28. During 1963-1971, Pakistan looked forward to making new friends in the Asian region to strengthen its socio-economic conditions.

With reference to the given reason, Pakistan, at that time, signed a trade agreement titled 'Regional Cooperation for Development' with

- A. Iran and Turkey.
- B. India and Sri Lanka.
- C. Malaysia and Bhutan.
- D. Indonesia and Afghanistan.

29. Pakistan played an active role in the formation of the Organisation of Islamic Cooperation (OIC) in 1969 to

- A. support Afghanistan against the USSR's invasion.
- B. build trade relationships with Western countries.
- C. help needy people of the world.
- D. promote Islamic solidarity.

30. During the period of 1953-1962, Pakistan had a strained relationship with the USSR because
- A. the USSR refused to allocate trade quota for the Muslim countries.
 - B. the USSR established a friendly relationship with China.
 - C. Pakistan had joined SEATO and CENTO against USSR.
 - D. Pakistan had cold relations with Afghanistan.

AKU-EB
Annual Examinations 2024
for Teaching & Learning only

END OF PAPER

Please use this page for rough work

AKU-EB
Annual Examinations 2024
for Teaching & Learning only